

MR-200

GPRS Router



- ❑ GPRS Router
- ❑ Ethernet port switch
- ❑ Dual SIM card operation
- ❑ Integrated RS-232 terminal server port
- ❑ SNMP management protocol
- ❑ Firewall
- ❑ IPsec VPN support (5 tunnels)
- ❑ VRRP, OSPF, BGP, RIP2 redundant protocols
- ❑ DIN Rail, wall or shelf mounted
- ❑ -20°C to +55°C
- ❑ 24VDC supply
- ❑ DES • 3DES • AES • SSL • SSH (optional)

Field of application

The MR-200 router is a GPRS router designed to be compatible with the current and future requirements of remote telemetry and industrial control systems applications. The unit has an integral Ethernet port and a 25 pin RS-232 serial interface for local connectivity. The Ethernet interface supports Multicasting (IGMP), VLAN, SNMP, SNTP, FTP, SNMP as well as all the standard TCP, UDP and DHCP protocols.

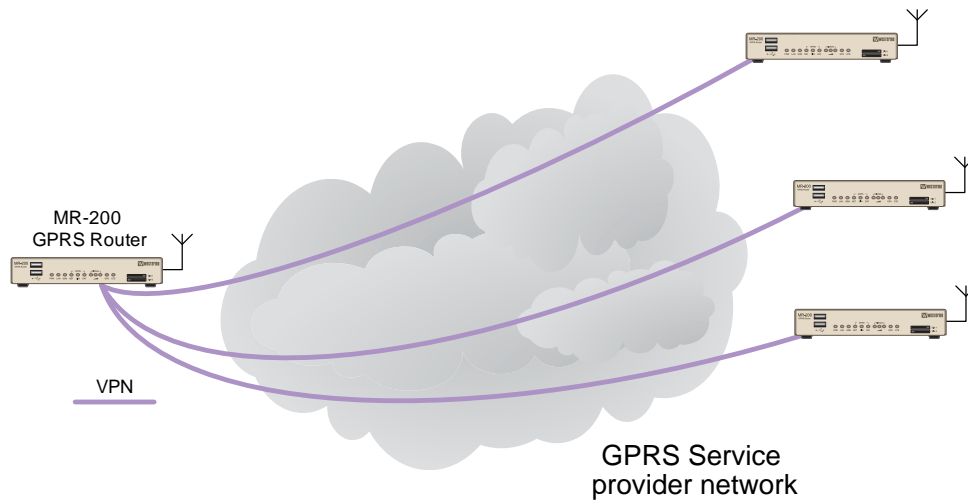
The inbuilt RS-232 port can be used to connect legacy serial based equipment such as PLCs, RTUs or IEDs. Alternatively the internal serial port can be used as a backup connection to the remote site when used in conjunction with a suitable Westermo Modem.

The MR-200 router has an integrated stateful inspection firewall and can support 5 IPSEC VPN (Virtual Private Network) terminations which can be secured using optional 3DES, AES, SSL, SSH encryption, and MD5, SHA1 key exchange protocols. These features ensure that the remote sites can use the latest security technology to resist denial of service attacks and hacking. The VPN's can be used as a way of increasing security and to create secure tunnels, run-

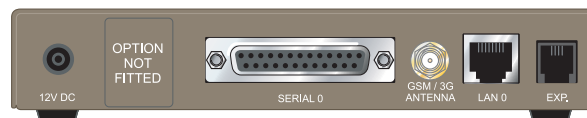
ning between sites. The VPNs can be used to interconnect the sites effectively replacing the requirement for dedicated leased lines. The VPN tunnels can be terminated on either another MR-200 ADSL router or on a Westermo DR-2xx ADSL router. An optional license for 50 VPN terminations is also available.

The MR-200 can also be used for remote sites access, allowing the user to browse WEB pages, monitor / edit PLCs or access any device connected to the LAN. The MR-200 will allow devices connected on the LAN side to send emails or connect to FTP servers for transferring files. The MR-200 supports VRRP (Virtual Redundant Router Protocol) allowing multiple physical routers to share a single gateway and provide multiple backup WAN connections. For complex network applications the MR-200 supports OSPF and RIP2. The MR-200 is supplied with a complete mounting kit for DIN rail, wall or shelf mounting. The wide temperature range and 24VDC supply ensure that the MR-200 can be used in industrial applications without the need for modification or consideration of the environmental conditions.

Application



Interfaces



Details

Network	GSM 850 / GSM 1800 / GSM 1900 Class 10 GPRS
Data Interface	Ethernet 10/100 Mbit/s Serial 25 Pin RS-232 Sync / Async
Antenna	GSM – 50 Ohm SMA
Case Material	Pressed steel
Power	12 – 24 VDC 250 mA
Protocols	TCP/IP / PPP / X.25 / XOT / FTP / Sync Tunnelling / SNMP / SMTP
Security	IPSec (5 tunnels Included) DES / 3DES / AES (Encryption is optional)
Network Features	Dynamic DNS and VPN tunnelling to enable use with dynamic network addresses. Detection of network problems and automatic failover to second GSM network. Dial Up (CSD) / Standby APN Remote management including over the air software updates
Management	Web server and command line interface remote and local access SNMPV 2.0c
Temperature	-20°C to +55°C Operating
Size / Weight	160 mm x 130 mm x 32 mm, 500 g
Programming	ScriptBASIC interpreter with user extensible libraries and control over main functions such as SMS, memory, serial ports, or other local devices.