

ED-210

Ethernet Router



- ❑ Integrated V.34 telephone modem
- ❑ Integrated 4 port plug and play switch
- ❑ Point-to-point applications
- ❑ Dial-up/leased line
- ❑ Dial-in/dial-out
- ❑ Dial on demand
- ❑ Firewall
- ❑ SNMP
- ❑ Simple to use Windows based configuration software or Web tool
- ❑ Communication statistics in Web tool
- ❑ Wide DC power range
- ❑ Extended temperature -25 to $+70^{\circ}\text{C}$
- ❑ Galvanic isolation and enhanced surge/transient protection on all ports

Field of application

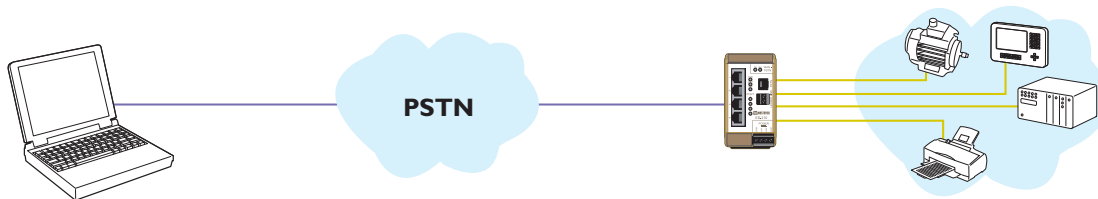
The ED-210 is an industrial Ethernet router with integrated 4 port switch and telephone modem that can be configured for use in a number of different applications. As a basic PPP Router using Dial-in or Dial-out the unit can be used to gain access to a remote Ethernet network. Security and passwords along with IP level firewall provides security.

The modem is equipped with transient protection on the line side and a “watchdog” that monitors and automatically resets the modem in the event of a fault.

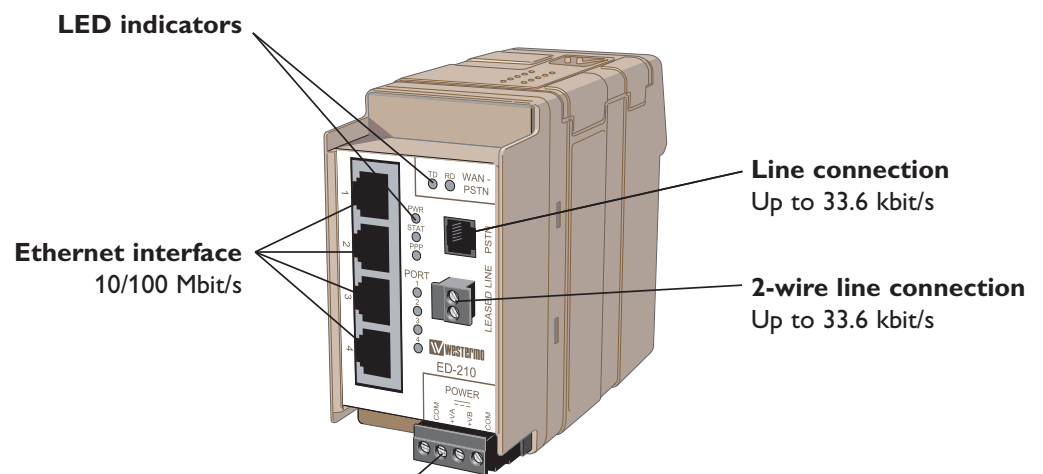
Configuration of the unit is simple, the switch have auto-negotiation and all other settings uses Windows based programming or the integrated Web tool.

Galvanic isolation on all ports enables the device to be used in projects where a high degree of reliability is required.

Application



Interfaces



Power

	ED-210
Operating voltage	10 to 60 VDC (Reverse polarity protected)
Rated current	190 mA @ 24 VDC
Rated frequency	DC
Connection	Detachable screw terminal