



# westermo®

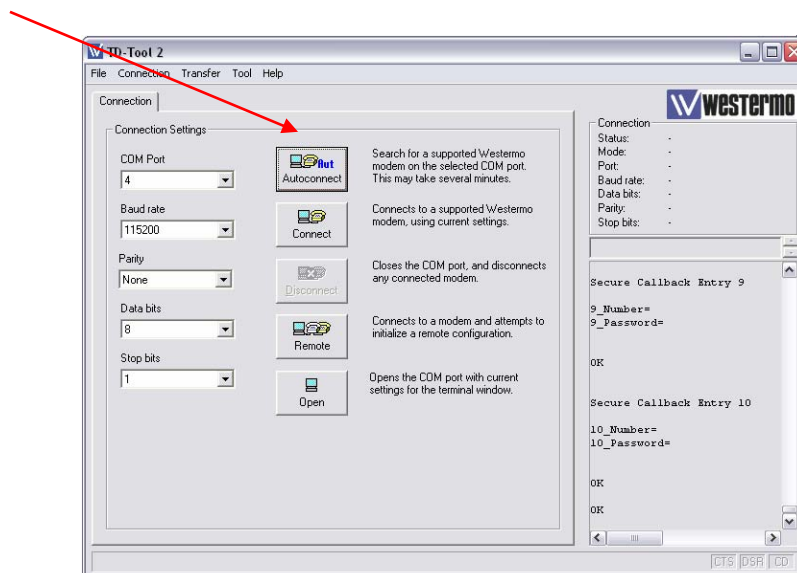
## INFORMATION

www.westermo.com

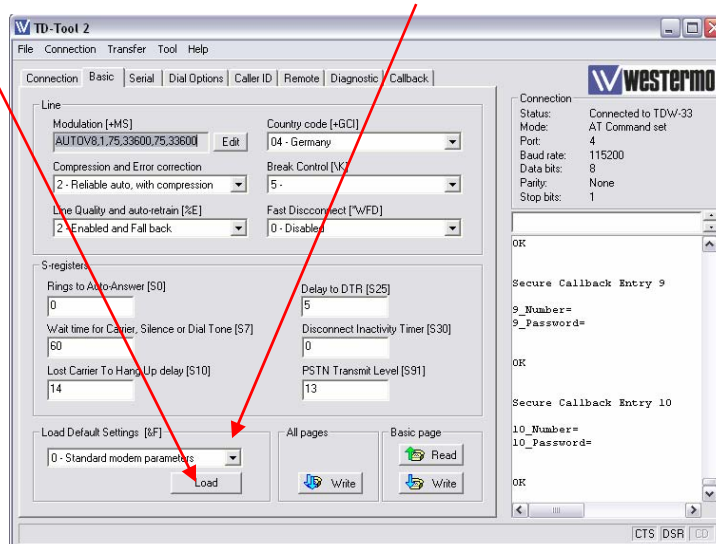
### Firmware Upgrade via TD-Tool 2

Westermo Teleindustri AB

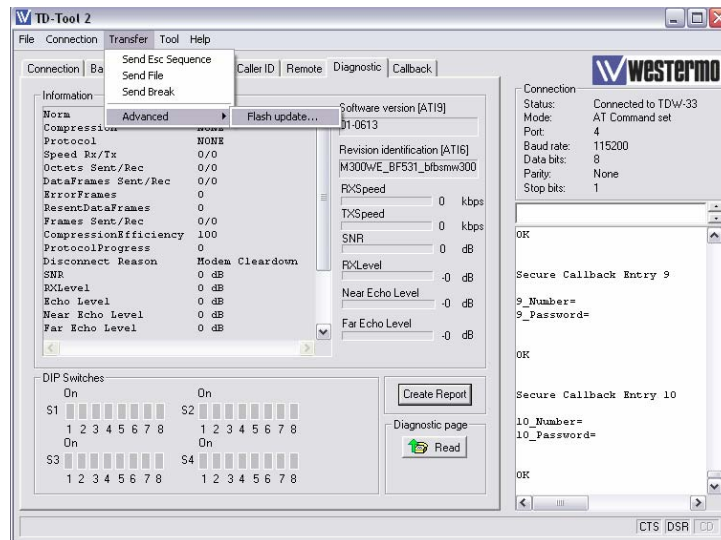
1. Start TD-Tool2 on your computer, if you haven't installed it, install it first from the CD that is delivered with the modem. Check if the TD-Tool Version is 4200.1508 2.08 in the *About* menu
2. Choose the right COM-Port and connect the modem via a straight RS-232 cable to your computer
3. Click on the Autoconnect button, after a short time, the modem shall be found and read out.



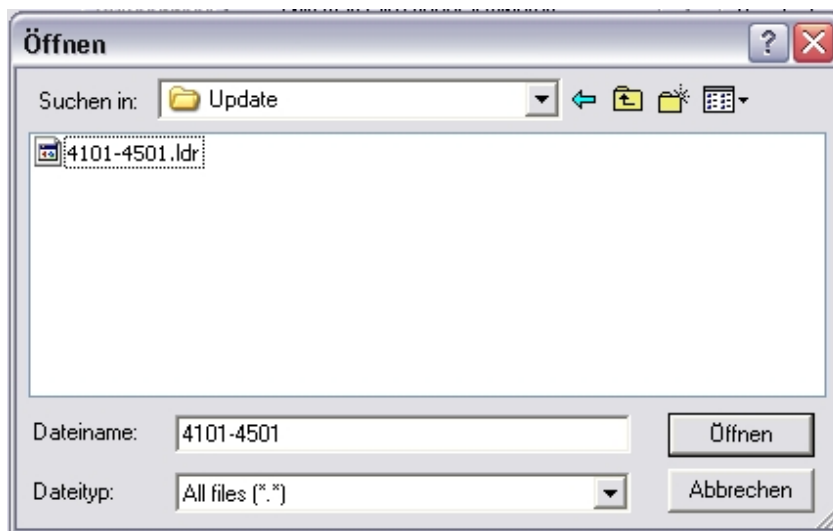
4. Change to the Basic registercard
5. Click on the *Load* button for factory defaults, choose in the drop field 2- Westermo specific parameters and click again on Load



6. Select in the *Transfer menu Advanced/Flash update*



7. In the following window, choose the .ldr firmware file and click Open.



8. A Warning message appears, click OK.
9. The upgrade will start and after the update process, the message Download successfull will appear.
10. Reset the unit via powersupply afterwards, and reconnect via TD-Tool 2

**If the Upgrade does not succeed, set the modem manually either via DIP-switches or AT+IPR=115200 to 115.2Kbit/s and retry.**

**If the Flashing routine gets stuck, and the modem shows only DTR / RTS / PWR Led's, reset the unit manually via supply and close TD-Tool 2**

**If TD-Tool 2 doesn't work on your computer, than try to perform the update with a terminal software, like shown in the upgrade example UpdateTelemodemTerminal.pdf**