



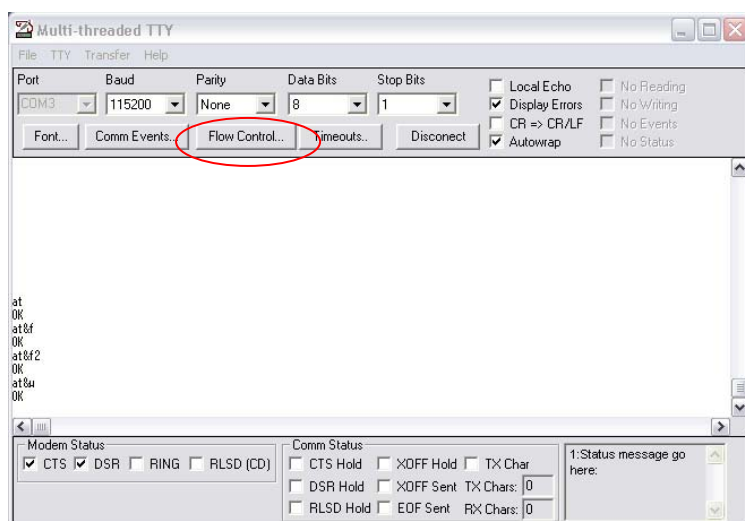
westermo®

INFORMATION

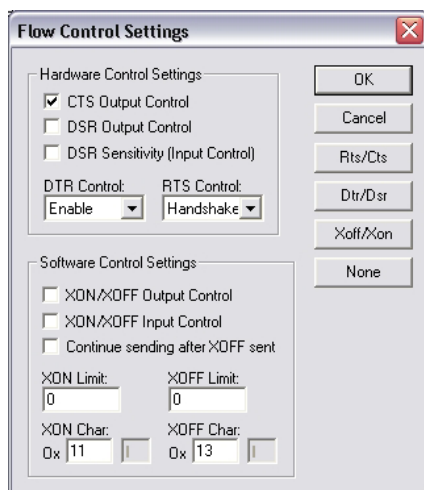
www.westermo.com

Firmware update via terminal software e.g. Mttty

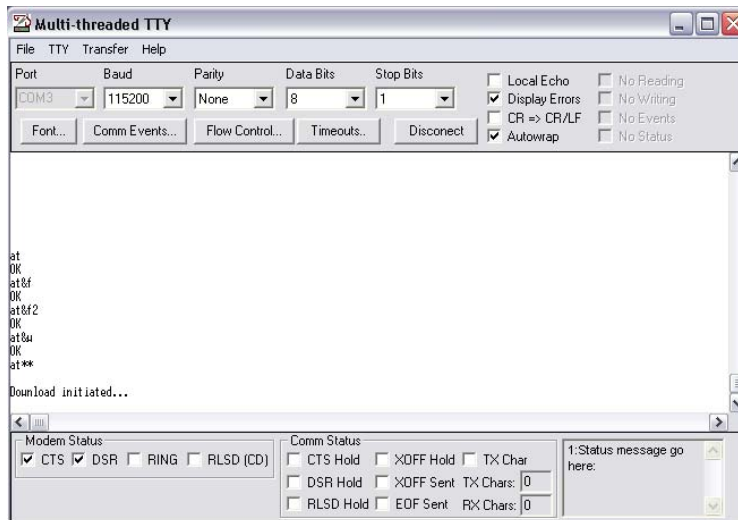
1. Start your Terminalemulation and set the serial parameters as shown to 115200/8/N/1
2. Send AT&F, AT&F2 and AT&W to the modem, to reset it to factory default.



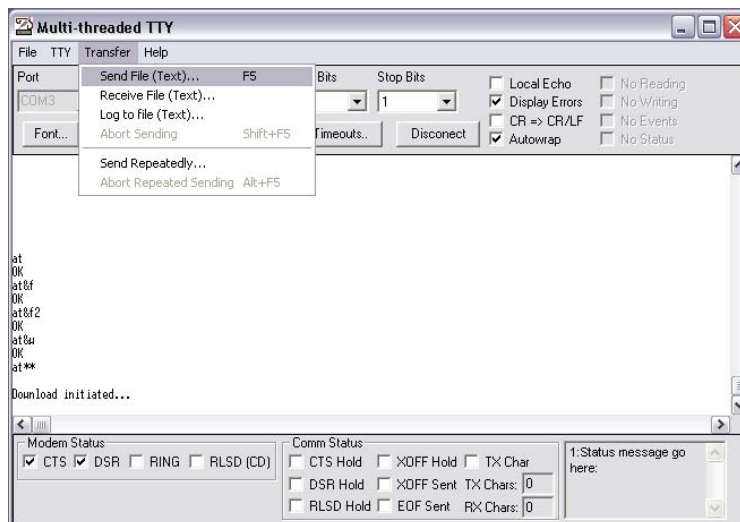
3. Check that the hardware handshake for the update is enabled and set to RTS/CTS. This settings are reached via the FlowControl button.
4. In the Flow Control menu, click RTS/CTS.



5. Send AT** to the modem, the message Download initiated appears.



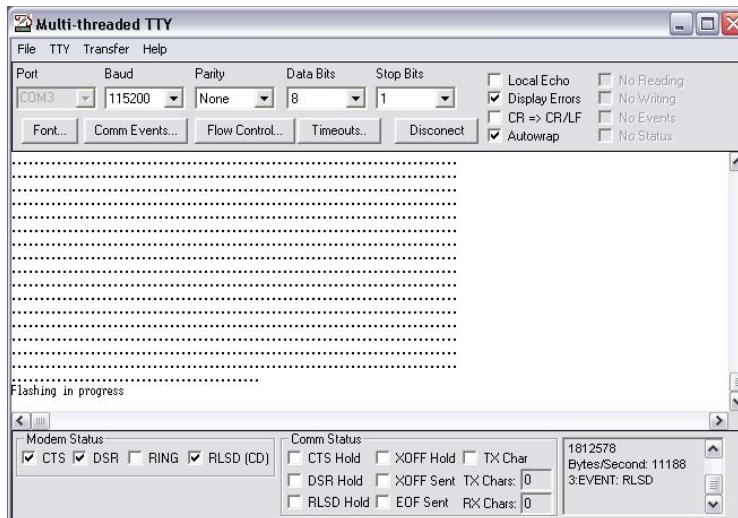
6. Now send the firmware file to the modem via the Send as Text option. Click on Transfer Menu and choose Send File (Text)



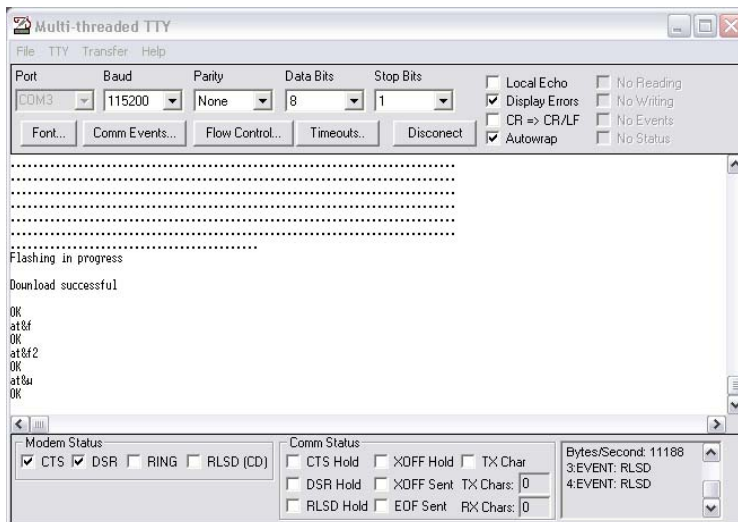
7. A new window will open, browse to the firmware files directory and click open.



8. Dots will appear on the screen during flashing. After a while the message Flashing in progress appears. Now the modem flashes internally, do not power down!!!



9. When the modem reports download successful, key in AT&f, AT&F2 and AT&W. Powercycle the modem.



10. Check the firmware version with AT+I9.

