

Distribution R&D Westermo	Ärende/Item Bootloader and Firmware	Datum/Date 050830	Reg.nr/Reg.No. T05-0155	Rev	Sida/Page 1(3)
	Update of EDW-100	Utfärdad av/Issued by Pontus Timlöv			Godk.

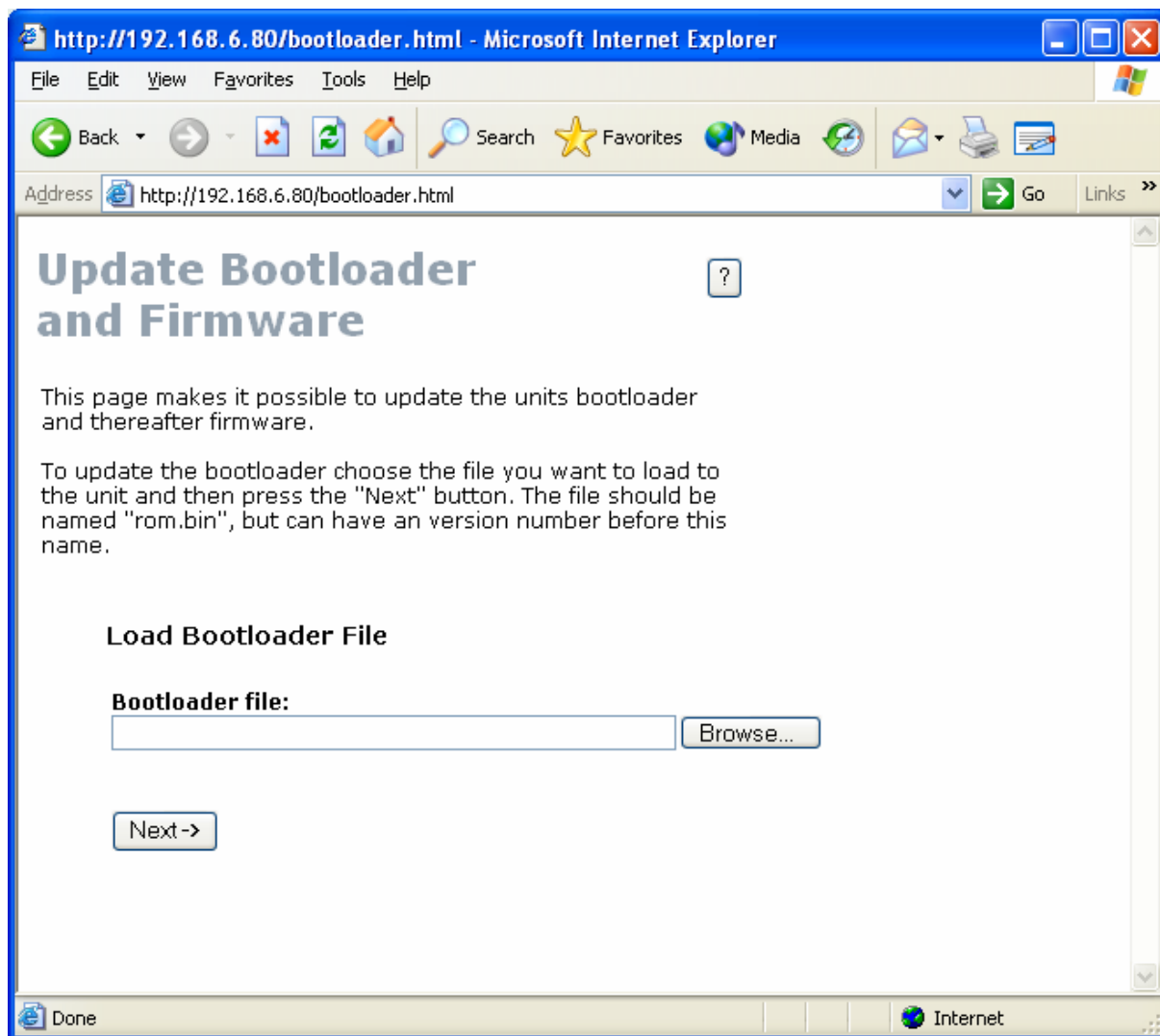
To update the Bootloader and Firmware in EDW-100 the operator needs to know the following:

- The EDW-100's IP address.
 - The “xxxxrom.bin” and “xxxximage.bin” (xxxx version number of the file) files to download to the EDW-100. These can be obtained from the Westermo.com web site or the local Westermo distributor.
1. If the current settings in the EDW-100 are to be restored after the update then these should be saved on using the Webtool before the update continues.
 2. Connect to the EDW-100 through a web browser using the IP addressing the EDW-100's IP address + “/bootloader.html” in the address field of the browser. Example
169.254.100.100/bootloader.html
 3. User name and Password have to be correct before the update can begin. The User name is the 4 beginning digits in the EDW-100's Art. No. The Password is the last 4 digits in the EDW-100's Art. No.



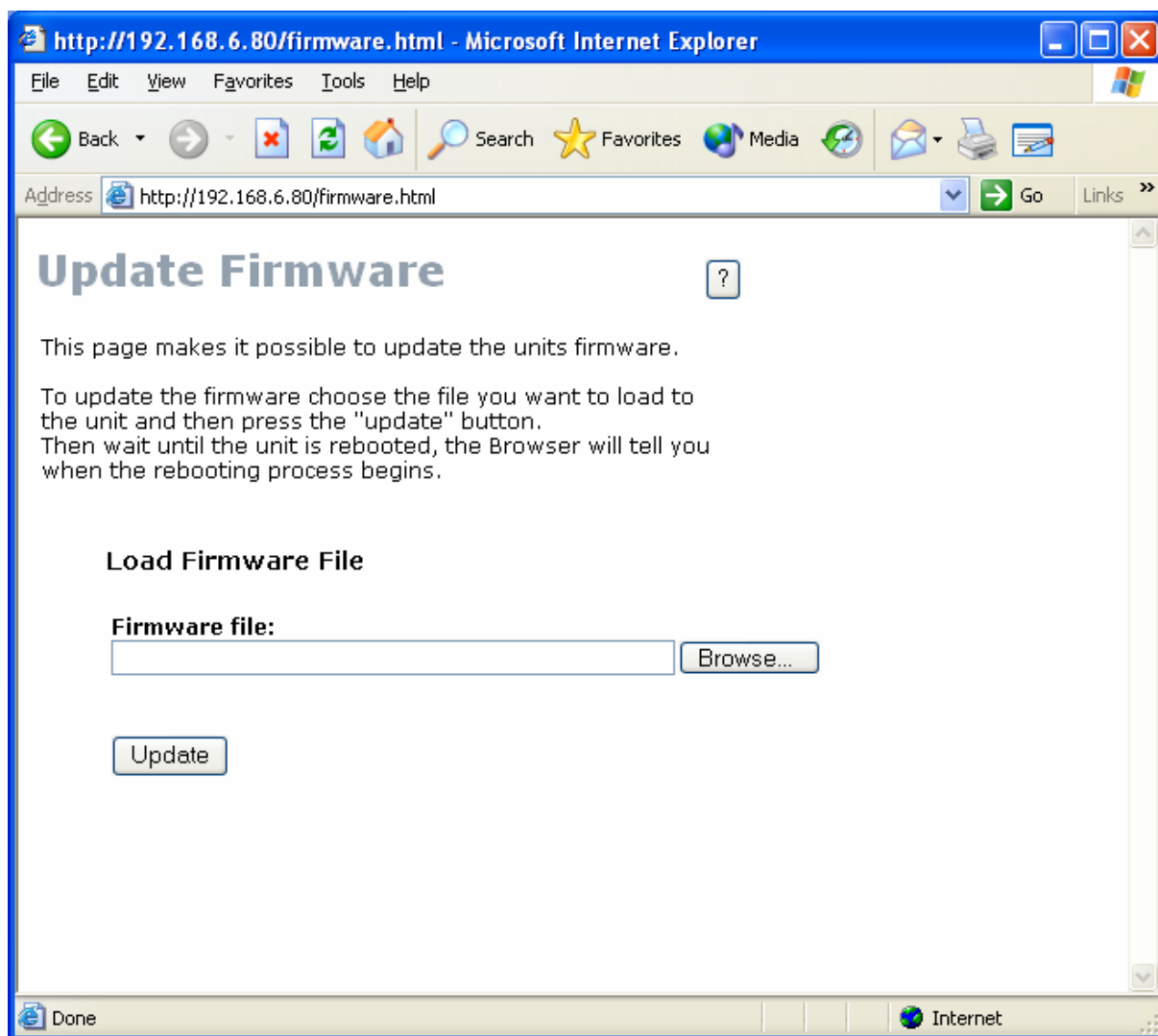
4. Example. Art. No. 3616-0001
User name = 3616
Password = 0001

Datum/Date	Reg.nr/Reg.No.	Rev	God	Sida/Page
05-08-30	T05-0155			2(3)



5. Chose the bootloader file to be downloaded to the EDW-100 by typing in the source path in the Bootloader file field or chose the file by pressing the Browse button. The bootloader file name will end in "rom.bin" if the wrong file is selected the update will halt.
6. Press the "Next ->" button to start to download the file to EDW-100. During the download of the bootloader the EDW-100 will stop all other operations. If power is lost during the download, the EDW-100 will be corrupted and will need to be sent back to your distributor for repair. When the bootloader has be downloaded the EDW-100 will ask for the image file.

Datum/Date	Reg.nr/Reg.No.	Rev	God	Sida/Page
05-08-30	T05-0155			3(3)



7. Chose the firmware file to be downloaded to the EDW-100 by typing in the source path in the Firmware File field or chose the file by pressing the Browse button. The firmware file name will end in "image.bin" if the wrong file is selected the update will halt.
8. Press the "Update" button to start the download to EDW-100. During the download of the firmware the EDW-100 will stop all other operations. If power is lost during the download, the EDW-100 will be corrupted and will need to be sent back to your distributor for repair.
9. Now the EDW-100 is updated with the new bootloader and firmware. The IP address, Subnet mask and Default Gateway will be the same as before the update, but the other settings could have changed. The unit can now be configured to suit the application by using the Webtool or the EDW-100 can be reset to the default settings using the DIP-switches. If the settings in the unit were saved on file before the update, these can now be loaded back in using the Webtool.